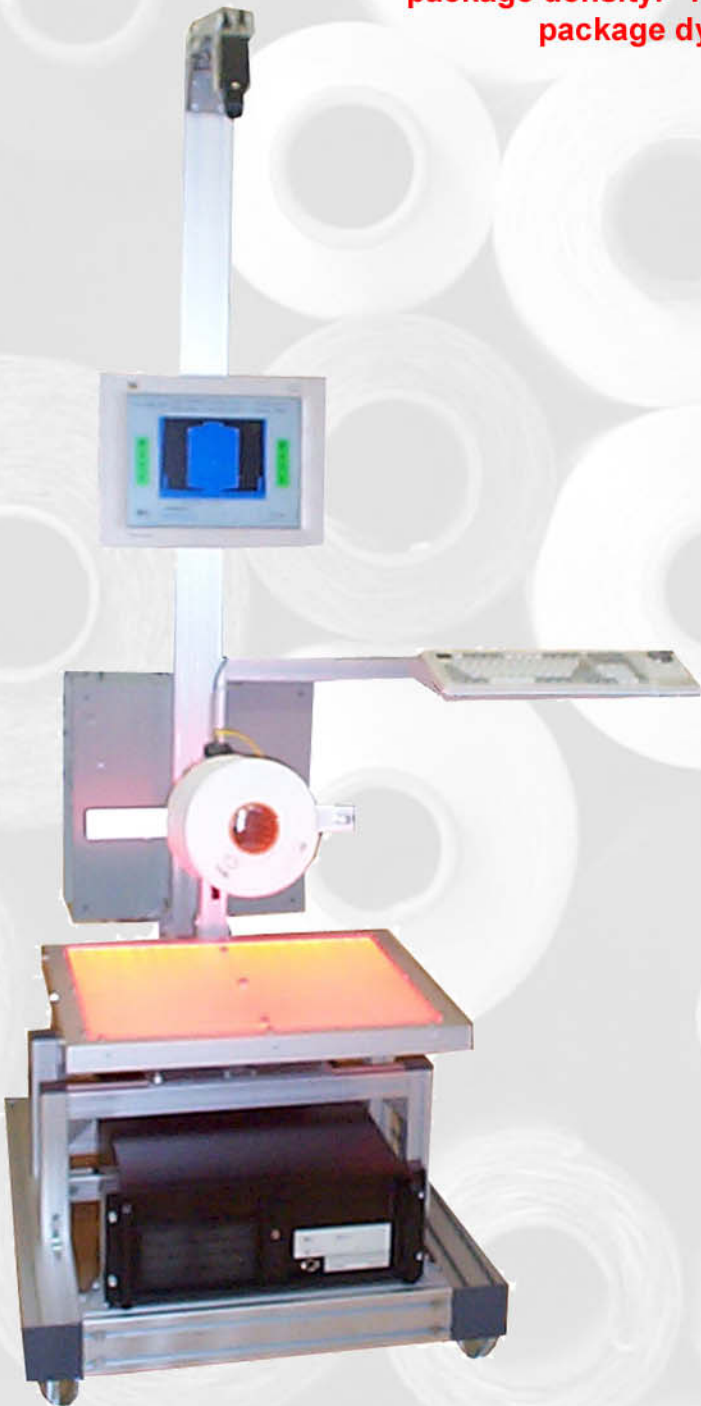


# APA<sup>TM</sup>

## Automated Package Analyzer

The APA Automated Package Analyzer combines a camera inspection system and an industrial weight scale to provide fast, easy, and accurate yarn package measurements, including package density. Package density is critical to package dyeing and yarn bulk.



**Package Types:** Any type, Up to 12" diam, 12" length, 20 lb.

**Operation:** Slip the yarn package onto the creel post. The APA system automatically senses that a package has been slipped onto the creel post, and in 1-5 seconds (depending upon the weight of package), the inspection results are displayed on screen. The PASS or FAIL result is clearly displayed. The PASS and FAIL results are based upon user-defined PASS/FAIL criteria.

**Mobility:** System includes wheels, and APA can be powered by 12 vdc car battery to wheel APA from doff position to doff position.

**Advantages:**

- Ensure even package dyeing and bulk
- Easy and fast to operate
- Ergonomic
- Save data to analyze production
- Accurate and repeatable measurements
- Cannot be easier to operate - just put the package on the post.
- No moving parts
- Non-contact inspection
- Automatic optical calibration takes place during each inspection

**Measurements:**

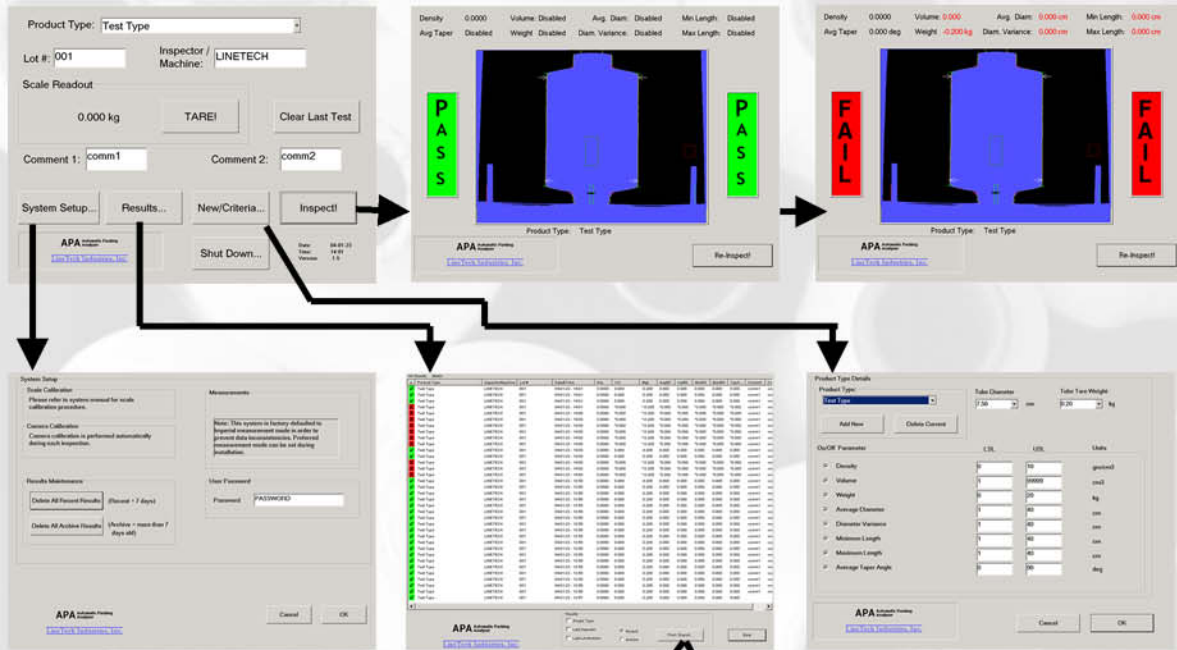
- Density (gm per cm<sup>3</sup>)
- Weight (kg/lb)
- Yarn Volume (cm<sup>3</sup>/in<sup>3</sup>)
- Min Diameter (cm/in)
- Max Diameter (cm/in)
- Diameter Variation (cm/in)
- Wind Length (cm/in)

**Output:**

- Results in metric or imperial
- Result data displayed on screen
- Data output to excel file
- Data printout report

# APA<sup>TM</sup>

## Automated Package Analyzer



**System dimensions:**  
 H = 81" / 2050mm  
 W = 30" / 760mm (without keyboard)  
 D = 37.5" / 950mm

**System weight: Approx. 175lb / 80kg**  
 Weight resolution: 1 gram  
 Image resolution: 0.6 mm / .025"  
 Power: 100 - 240 VAC, 50/60 Hz

Standard APA System includes: Mobile floor-standing platform with locking wheels, PC (Windows 2000, HDD, floppy, ethernet ready), strain gauge load cell weight scale, creel post fixture, CCD camera, optics, LED light plate (20,000 hour lifetime), control electronics, LCD flatscreen SVGA monitor, keyboard, mouse, surge suppresser / power filter, manual, weight calibration object, printer.

### Other LineTech Vision Inspection Systems include...



**Packing Systems**

**Conveyor Systems**

**Laboratory Systems**

**On-Line Systems**

40 Ocean Pkwy, Suite 2E  
 Brooklyn, NY 11218  
 USA

**LineTech Industries, Inc.<sup>TM</sup>**  
 VISION INSPECTION SYSTEMS FOR TEXTILES

Tel: 1-718-222-3471  
 Fax: 1-718-228-3680  
[www.linetechindustries.com](http://www.linetechindustries.com)